

Course Offerings for Freshmen ~ 2015-2016

**Cherry Hill High School
East and West
Guidance Department**

Middle School Awareness

- All students enter high school with the potential to continue their education after high school
- Youngsters sometimes make decisions in the early school years which limit their choices
- Planning is important for every student; especially those who aren't yet thinking about college

Potential Problems

- Limited Options may result from:
 - ~ poor grades
 - ~ poor course planning
 - ~ poor attendance

Keep Options Open

- **Students who plan have choices:**
 - ~ not every student will be thinking about college/careers
 - ~ each child deserves the opportunity to make that choice
 - ~ look at the requirements
 - ~ students interests

Keep Options Open (Continued)

- ~ strengths/weaknesses
- ~ create a 4-year plan
- ~ course load balancing
- ~ time constraints

How a College Decides

- ◆ Courses taken
- ◆ Recommendations
- ◆ Grades
- ◆ Essays
- ◆ Geography
- ◆ GPA
- ◆ Interview
- ◆ Social Media
- ◆ Legacy
- ◆ Class rank
- ◆ Activities
- ◆ Major choice
- ◆ Admission Testing
- ◆ Special Skills
- ◆ Ability to pay????

Freshmen Registration Information

CHPS Website:
www.cherryhill.k12.nj.us/

**Open Curriculum/Instruction
Assessment Link**

**Cherry Hill High School East and West
serve the varied needs and objectives
of students through a four-year
comprehensive curriculum.**

**Please make your selections carefully
by using the following outline
as a guide.**

Requirements for Graduation

Class of 2019

English	4 years
World Civilization	1 year
US History	2 years
Mathematics (Algebra I, Geometry, 1 Additional)	3 years
Science (Biology, Chemistry/Env. Sci.)	3 years
World Language	1 year
Physical Education and Health	4 years
Fine & Performing Arts	1 year
Career/Consumer Science	1 year
Financial Literacy	1/2 year

CREDITS

120 TOTAL

Typical Freshman (36 Credits)

41 Credits

- English
- World Language
- Physical Education
- Math
- Science
- World Civilization
- Elective
- Elective (Study Hall)
- Lunch (Fixed for all students)

The Schedule

7:30-2:30	Day 1	Day 2	Day 3	Day 4
7:30 - 8:27 Period 1 57 minutes	A	D	C	B
8:31 - 9:28 Period 2	B	A	D	C
9:32 - 10:29 Period 3	C	B	A	D
10:33 - 10:58 Lab 1	Lunch/Break	Lunch/Break	Lunch/Break	Lunch/Break
11:02 - 11:27 Lab 2	Lunch/Break	Lunch/Break	Lunch/Break	Lunch/Break
11:31 - 12:28 Period 4	E	H	G	F
12:32 - 1:29 Period 5	F	E	H	G
1:33 - 2:30 Period 6	G	F	E	H

7:30 - 2:30	Day 5	Day 6
7:30 - 8:58 Period 1 88 minutes	A	C
9:02 - 10:29 Period 2 87 minutes	B	D
10:33 - 10:58 Lab 1	Lunch/Break	Lunch/Break
11:02 - 11:27 Lab 2	Lunch/Break	Lunch/Break
11:31 - 12:58 Period 3 87 minutes	E	G
1:02 - 2:30 Period 4 88 minutes	F	H
Schedule reflects increased instructional time of 30 minutes.		

Underclass – With Study Hall

Day 1	Day 2	Day 3	Day 4
1 – English	4 – Elective	3 – Science	2 – Science
2 – Science	1 – English	4 – Elective	3 – Study Hall
3 – Study Hall	2 – Science	1 – English	4 – Elective
Lunch/Break	Lunch/Break	Lunch/Break	Lunch/Break
5 – Social Studies	8 – Math	7 – World Language	6 – Phys Ed/Health
6 – Phys Ed/Health	5 – Social Studies	8 – Math	7 – World Language
7 – World Language	6 – Phys Ed/Health	5 – Social Studies	8 – Math

Day 5	Day 6
1 – English	3 – Study Hall
2 – Science	4 – Elective
Lunch/Break	Lunch/Break
5 – Social Studies	7 – World Language
6 – Phys Ed/Health	8 – Math

Single Science – 8 classes

Day 1	Day 2	Day 3	Day 4	Day 5	Day 6
1 – Elective	4 – Math	3 – English	2 – Phys Ed/Health	1 – Elective	3 – English
2 – Phys Ed/Health	1 – Elective	4 – Math	3 – English	2 – Phys Ed/Health	4 – Math
3 – English	2 – Phys Ed/Health	1 – Elective	4 – Math	Lunch/Break	Lunch/Break
Lunch/Break	Lunch/Break	Lunch/Break	Lunch/Break	5 – Social Studies	7 – Music
5 – Social Studies	8 – World Language	7 – Science	6 – Science	6 – Science	8 – World Language
6 – Science	5 – Social Studies	8 – World Language	7 – Music		
7 – Music	6 – Science	5 – Social Studies	8 – World Language		

Levels

H = Honors

A = Accelerated

R = Regular (Math /LA)

Also Required for Graduation

- **Students must pass the HIGH SCHOOL PROFICIENCY ASSESSMENT (administered during the junior year) in order to graduate. According to the State of New Jersey, the Class of 2019 will have to pass the new PARCC assessments for graduation.**
- **Students must take an end-of-course competency assessment in Biology.**

Course Load

Each student will take a minimum of 35 credits per year.

Students are requested to choose two alternates for each elective.

Grade 9

All Freshmen must take:

English I (H, A, R)

Grade 9

All Freshmen must take:

World Civilizations (H, A)

Science Program Class of 2019

A minimum of three years of science.

Freshman Science Choices

- Quantitative Physical Science (H)
- Conceptual Physical Science (A)

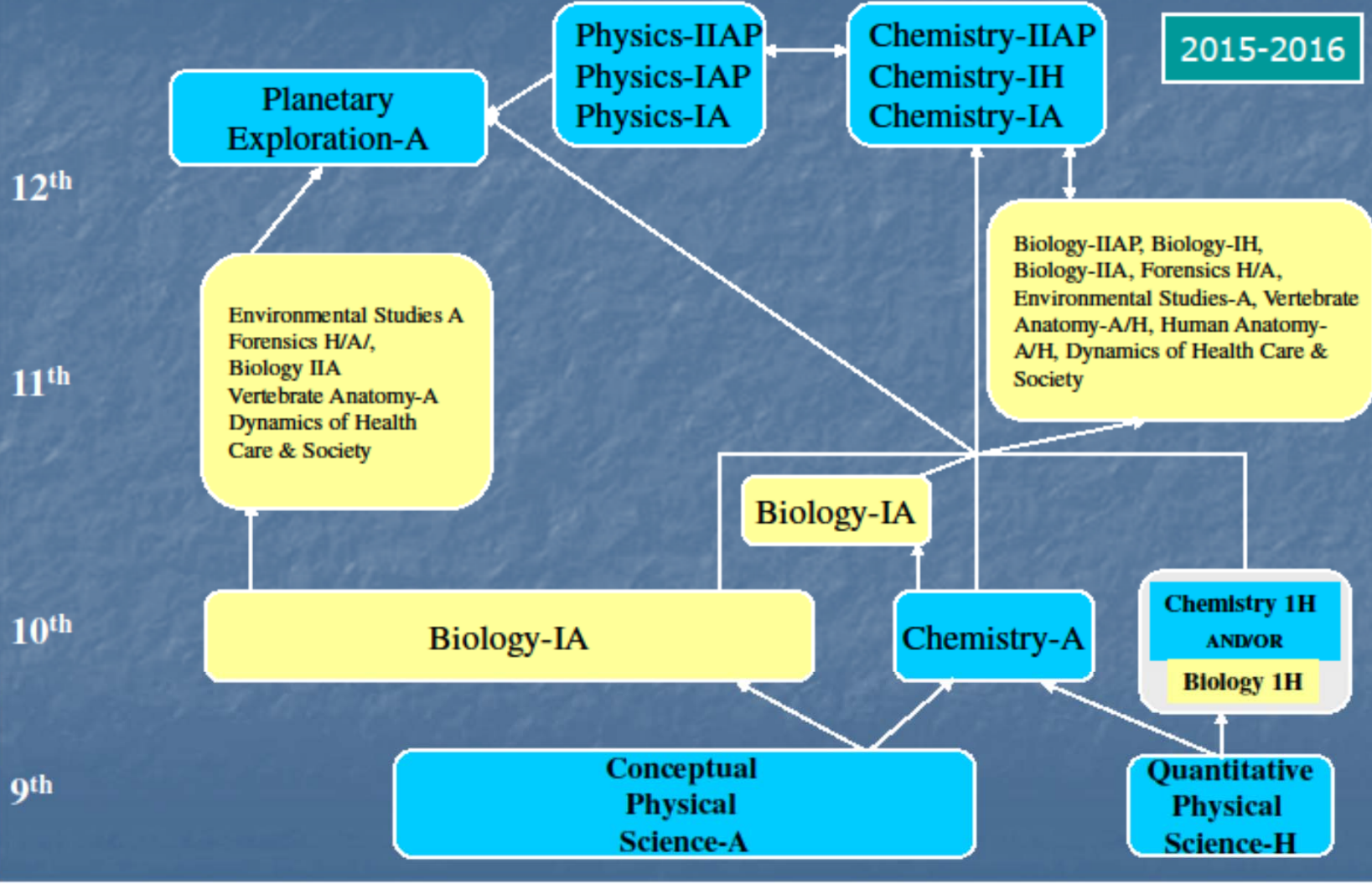
*These are not the same courses.

Science Program

Cherry Hill High Schools

Research In Science-H/A 9-12th Grade

2015-2016



Mathematics Sequence

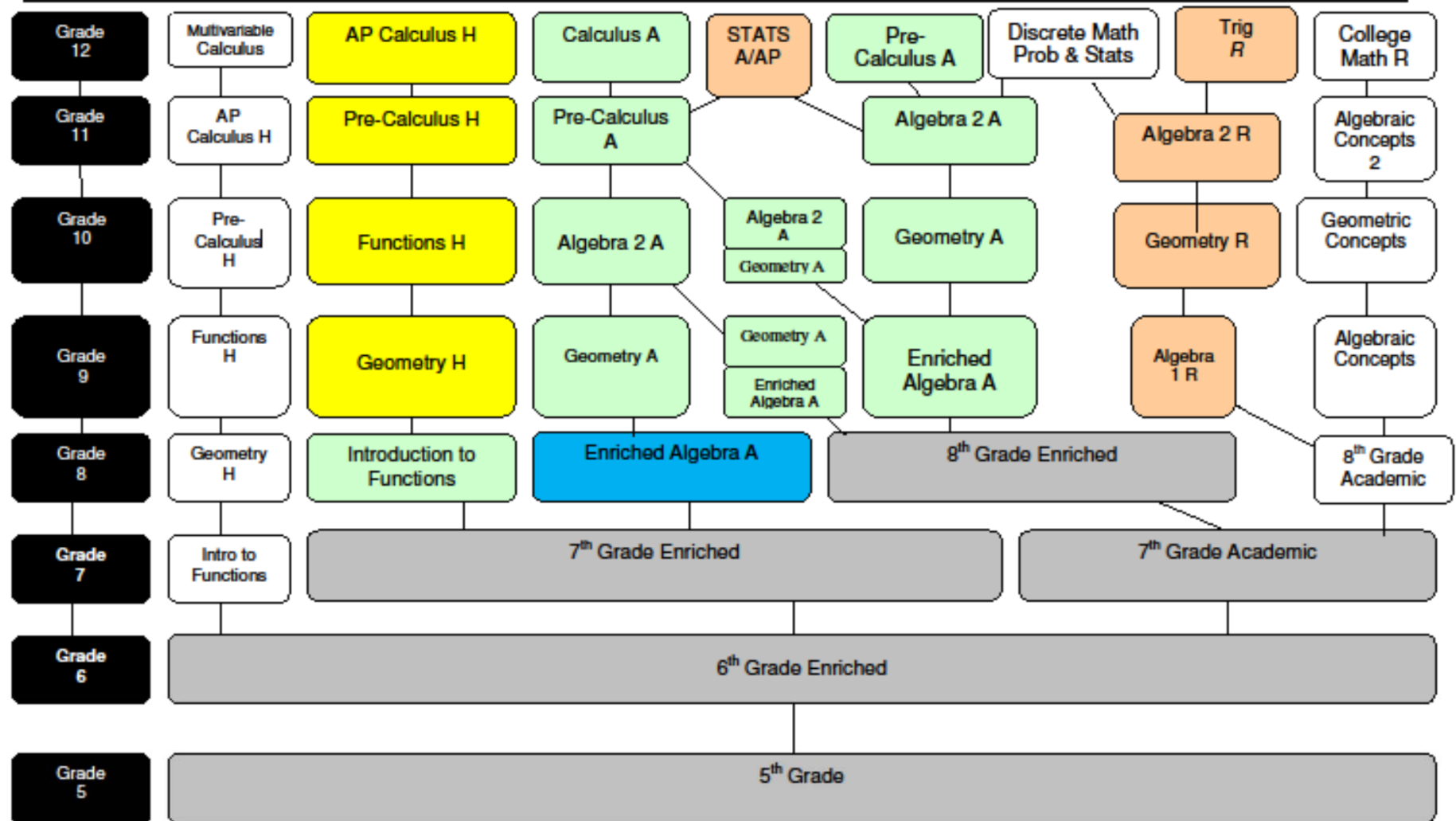
Typical

- 9th - Enriched Algebra
- 10th – Geometry A (H)
- 11th - Algebra II A
- 12th - Pre Calculus A

Advanced

- 9th - Geometry H or A
- 10th - Functions H
- 11th - Pre Calculus H
- 12th - Calculus AP

Core Mathematics – Cherry Hill Public Schools SY 2015-2016



Physical Education/Health

All students must take.

***Physical Education exemptions (Independent Study Physical Education) must go through Physical Education/Health Supervisor.**

World Language

Beginning language options include:

French IA, IH, 2A, 2H

Spanish IA, IH, 2A, 2H,

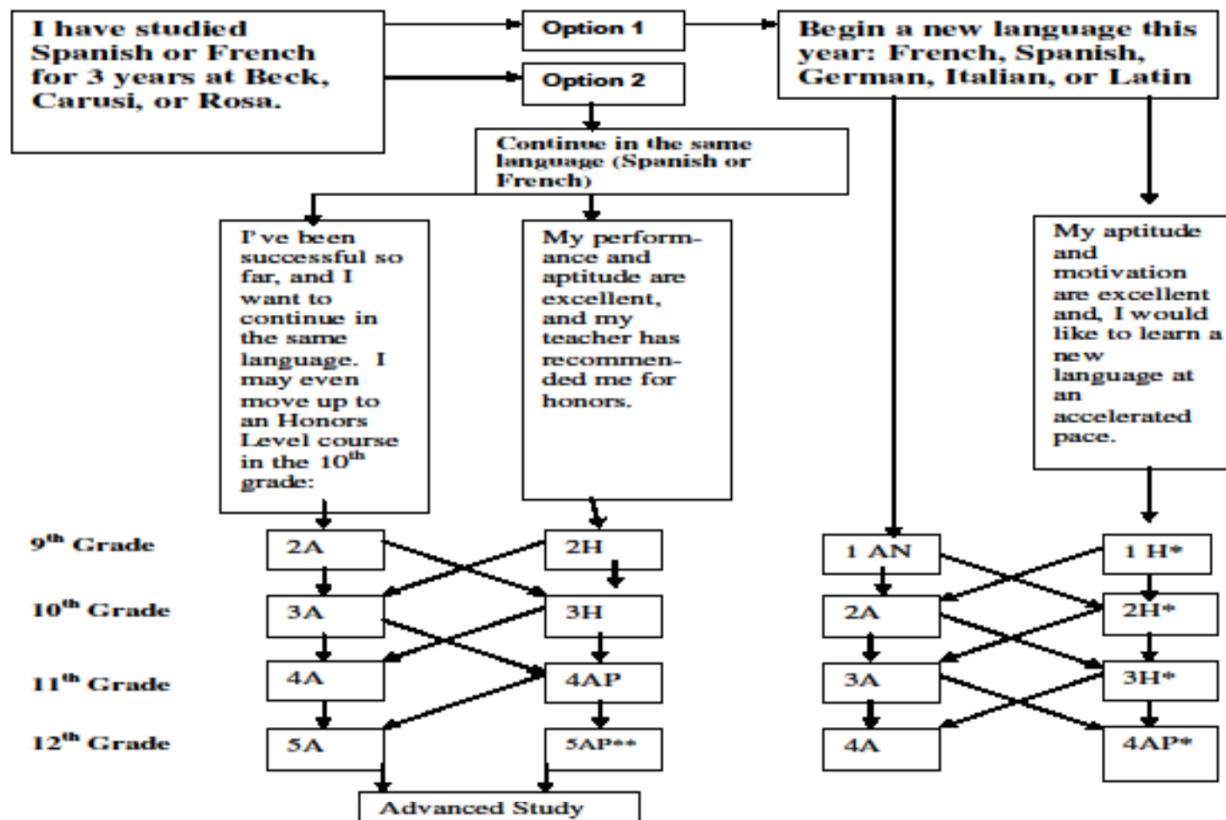
Latin IA, IH

German IA, IH (East)

Italian IA, IH (West)

We encourage students to continue a language sequence through all four years and to add additional languages to their program of study.

**WHERE DO I BELONG IN WORLD LANGUAGE?
For Cherry Hill 9TH Graders – Class of 2019**



*1H, 2H, 3H, and 4AP are offered in French, Spanish, Latin, German, and Italian.

**5AP is offered in French and Spanish

(Italian is offered at West ~ German is offered at East only)

English as a Second Language Program

Selection based on the results of a state-approved English language placement test.

Students at levels I and II receive two periods a day of English instruction. Students at Level III receive one period a day of English instruction.

Other Programs/Services

- In Class Support
- Replacement courses in English/History/Math/Science
- Self contained
 - Functional (West Only)
 - Vocational (West Only)

Electives

All subjects are worth 5 credits (Science is 6) unless otherwise noted. Students are requested to choose two alternates for every elective chosen. If it is a 5 credit elective, then two 5 credit alternates should be chosen.

Fine and Performing Arts Electives

Freshman Wind Ensemble

Symphonic Band (W)

Orchestra

Vocal Workshop

Music Theory

Living Theatre

Play Production

Art Workshop (W) (2.5)

Commercial Art

Foundations of Commercial Art

3-D Art

Graphic Design I and II

Introduction to Commercial

Photography (W)

Introduction to

Foundations of Commercial
Art (W) (2.5)

English Electives

Journalism I (A) (H)

Writing Workshop (A) (H)

Broadcasting I & II

Public Speaking (Dual Credit)

Technology Electives

Introduction to Applied Technology I or 2

Basic Drafting

Computer Graphics

Adv. Computer Graphics

Computer-Aided Design (W)

Adv. Computer-Aided Design (W)

Small Engines (E)

Sustainability I (W)

Business Electives

Intro. to Business 2.5

Financial Literacy 2.5

(Mandatory for Class of 2014 and beyond)

NJ-781 AFJROTC, Cherry Hill HS West

See the West website and click on our emblem for more information.



U.S. AIR FORCE

**Senior Aerospace Science Instructor
Lieutenant Colonel Allen Schwartz
Aerospace Science Instructor
Chief AI Gargas**

Call 663-8006 Ext. 1118

A CHARACTER BASED PROGRAM TO:
Educate & Train High School Students In Citizenship
Promote Community Service
Instill Responsibility, Character, & Self-Discipline

Providing Instruction In The Fundamentals Of Air & Space Science

Integrity - Service - Excellence

Additional Information.....

- Courses may be cancelled due to insufficient enrollments
- Upper class students may be given preference in elective classes
- You are choosing classes – not teachers or periods

Cherry Hill High School East

Guidance Office:

(856) 424-2222, ext. 2538

Cherry Hill High School West

Guidance Office:

(856) 663-8006, ext. 1244

NOTE

The purpose of this announcement is to inform students and parents that there are core course eligibility requirements for participation in NCAA Division I & II athletics.

Guidance counselors are available to counsel students on this concern.

Information is contained in the Course Selection Booklet.

Open Enrollment

- Please indicate your home-school
- Add school choice on the registration form
- Due in late February at your Middle School

Open House

- East – Thursday ~ February 5, 2015
Snow Date: Wednesday ~ February 11, 2015
- West – Wednesday ~ January 28, 2015
Snow Date: Thursday ~ January 29, 2015

*****Evening begins at 7:00PM*****

Counselor Orientations

- Beck: Thursday ~ January 8, 2015
Snow Date: Friday ~ January 9, 2015
- Carusi: Tuesday ~ January 20, 2015
- *Snow Date: Monday ~ January 26, 2015*
- Rosa: Thursday ~ January 22, 2015
Snow Date: Friday ~ January 23, 2015

Cherry Hill High Schools

CHHS WEST STAFF

Dr. Kwame R. Morton, Sr., Principal

Mr. Chuck Coligan, Assistant Principal, Grade __, Business/Social Studies/Fine Arts/Related Arts

Ms. Kathy Gendelman, Assistant Principal, Grade ____, World Language/Math

Mr. Augie Ramos, Assistant Principal, Grade ____, Special Education/Performing Arts

Mr. Lou Papa, Assistant Principal, Athletics/Science/ROTC/Health/PE

Ms. Allison Staffin, Assistant Principal, Grade ____, English/Community Service

Ms. Carol Roskoph, Director of Student Activities

Dr. John Burns, Assistant Principal, Budget

CHHS WEST GUIDANCE STAFF

Mr. James Riordan, Director of Guidance

Mr. Nick Caputi

Mrs. Melissa Franzosi

Ms. Brittany Gibbs

Mrs. Michelle Pryor

Mrs. Barbara Rakoczy (SAC)

Mrs. Maggie Strimel

Mrs. Lisa Saffici

Mrs. Cynthia Snowden

Mr. Cigus Vanni

Cherry Hill High Schools

CHHS EAST STAFF

Dr. Lawyer H. Chapman, Principal

Dr. John Burns, Assistant Principal, Grade ____, Athletics/Budget/Health/PE

Mr. Robert Hulme, Assistant Principal, Grade ____, Music/Drama/Math

Mrs. Betsi McLeester, Assistant Principal, Grade ____, World Language/Social Studies

Mr. Bernie O'Connor, Assistant Principal, Grade ____, Special Education/Facilities

Mrs. Marsha Pecker, Assistant Principal, English/Physical Science

Mr. CJ Davis, Director of Student Activities

Mr. Chuck Coligan, Assistant Principal, Business/Fine Arts/Related Arts

CHHS EAST GUIDANCE STAFF

Mr. James Riordan, Director of Guidance

Mrs. Jennifer DiStefano (SAC)

Ms. Yolanda McClain

Ms. Cathleen Enderle

Dr. Eileen Lynch

Mr. Roberto Figueroa

Mrs. Carly Friedman

Mr. Darren Gamel

Mrs. Laurie Grossman

Mrs. Margaret Regan

Mrs. Tish Schuman

Mrs. Tracye Walsh

Cherry Hill Public Schools Board of Education 2015 - 2016

Mrs. Kathy Judge, President
Mrs. Carol Matlack , Vice President

Mrs. Sherrie Cohen
Mr. J. Barry Dickinson
Mr. Eric Goodwin
Mrs. Colleen Horiates

Mr. Steven Robbins
Mr. Elliott Roth
Mrs. Lisa Saidel